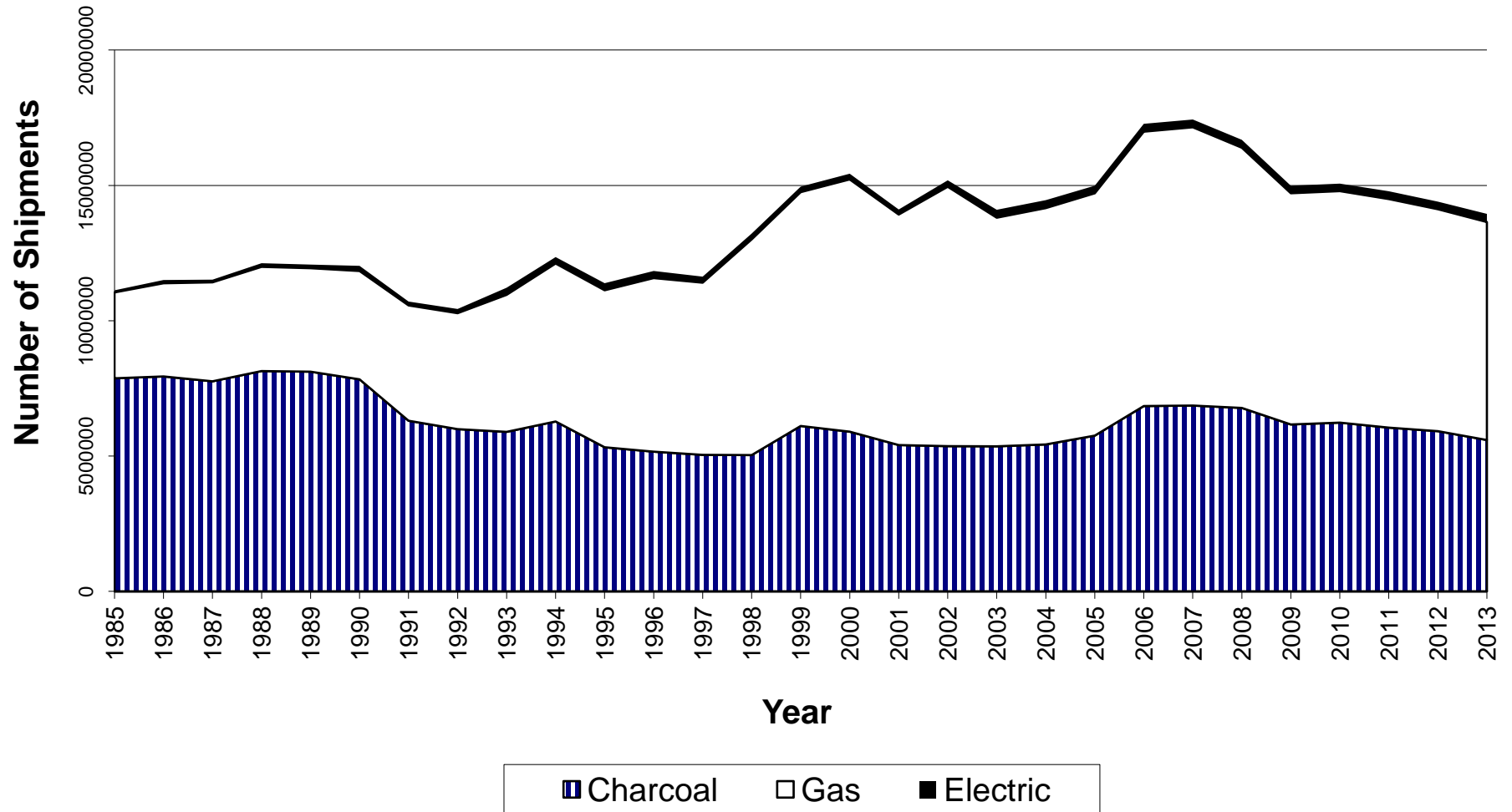


Barbecue Grill and Smoker Shipments
North America
1985--2013

Year	Charcoal	Gas	Electric	Total
1985	7,869,992	3,173,000	78,000	11,120,992
1986	7,938,592	3,443,000	120,000	11,501,592
1987	7,758,700	3,657,100	99,200	11,515,000
1988	8,137,400	3,850,300	134,700	12,122,400
1989	8,114,864	3,823,262	133,319	12,071,445
1990	7,831,621	4,002,279	190,809	12,024,709
1991	6,301,723	4,261,181	142,734	10,705,638
1992	5,992,326	4,283,387	155,895	10,431,608
1993	5,890,920	5,062,665	262,945	11,216,530
1994	6,274,420	5,837,136	237,425	12,348,981
1995	5,321,924	5,800,878	261,267	11,384,069
1996	5,159,325	6,413,417	262,862	11,835,604
1997	5,041,612	6,361,102	223,402	11,626,116
1998	5,033,205	7,969,537	215,534	13,218,276
1999	6,108,427	8,639,833	203,789	14,952,049
2000	5,898,000	9,320,000	211,000	15,429,000
2001	5,404,000	8,516,000	187,000	14,107,000
2002	5,363,500	9,583,500	238,200	15,185,200
2003	5,357,000	8,446,500	293,000	14,096,500
2004	5,426,250	8,732,200	293,700	14,452,150
2005	5,752,000	8,953,500	280,800	14,986,300
2006	6,845,000	10,137,500	290,000	17,272,500
2007	6,863,000	10,281,500	287,000	17,431,500
2008	6,775,000	9,614,000	292,400	16,681,400
2009	6,164,000	8,543,000	277,150	14,984,150
2010	6,232,500	8,553,500	276,600	15,062,600
2011	6,047,000	8,445,000	288,000	14,780,000
2012	5,917,000	8,200,000	280,000	14,397,000
2013	5,590,000	8,053,000	302,000	13,945,000

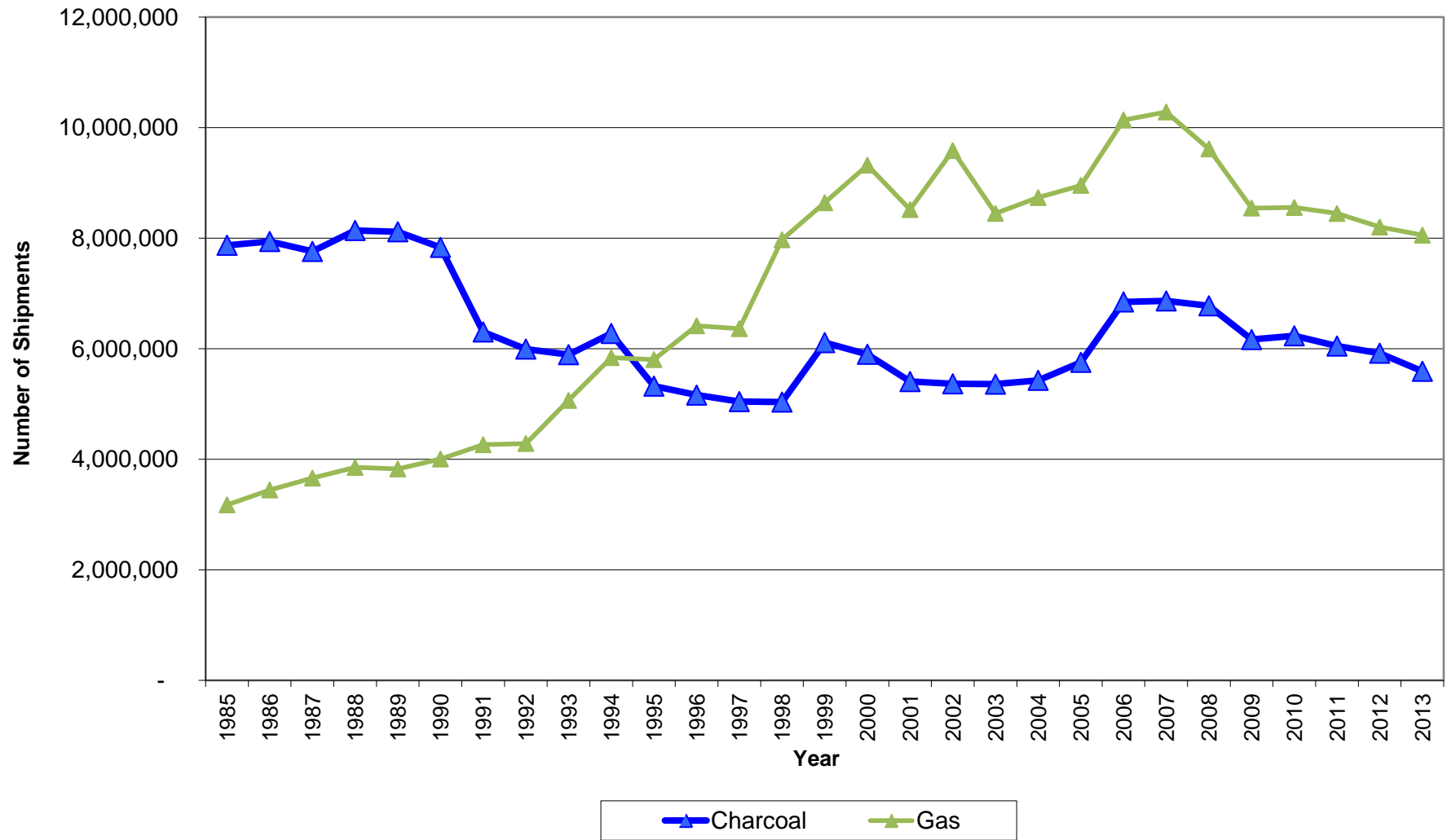
Barbecue Grill and Smoker Unit Shipments

1985--2013



Gas vs. Charcoal Unit Shipments

1985-2013



Barbecue Grill and Smoker Unit Shipments 2013

