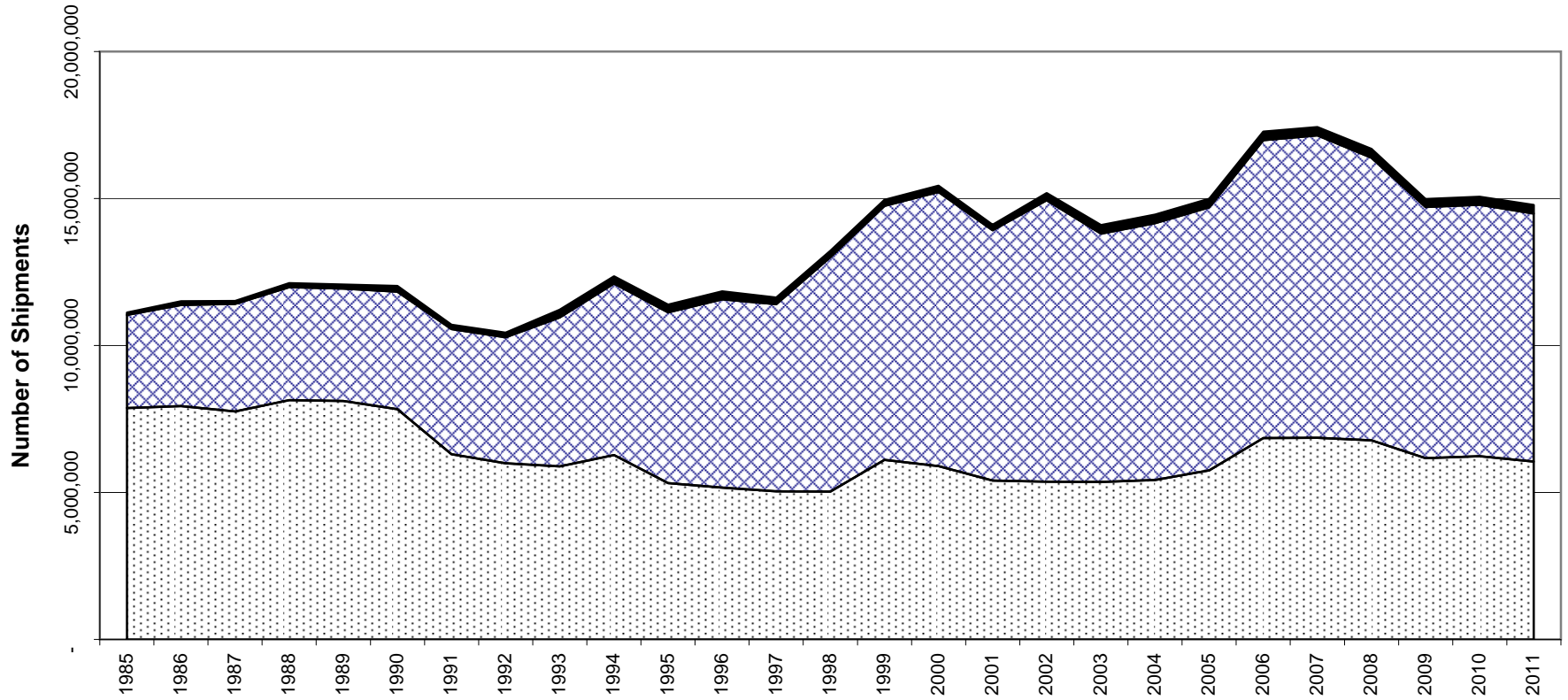


Barbecue Grill and Smoker Shipments
North America
1985--2011

Year	Charcoal	Gas	Electric	Total
1985	7,869,992	3,173,000	78,000	11,120,992
1986	7,938,592	3,443,000	120,000	11,501,592
1987	7,758,700	3,657,100	99,200	11,515,000
1988	8,137,400	3,850,300	134,700	12,122,400
1989	8,114,864	3,823,262	133,319	12,071,445
1990	7,831,621	4,002,279	190,809	12,024,709
1991	6,301,723	4,261,181	142,734	10,705,638
1992	5,992,326	4,283,387	155,895	10,431,608
1993	5,890,920	5,062,665	262,945	11,216,530
1994	6,274,420	5,837,136	237,425	12,348,981
1995	5,321,924	5,800,878	261,267	11,384,069
1996	5,159,325	6,413,417	262,862	11,835,604
1997	5,041,612	6,361,102	223,402	11,626,116
1998	5,033,205	7,969,537	215,534	13,218,276
1999	6,108,427	8,639,833	203,789	14,952,049
2000	5,898,000	9,320,000	211,000	15,429,000
2001	5,404,000	8,516,000	187,000	14,107,000
2002	5,363,500	9,583,500	238,200	15,185,200
2003	5,357,000	8,446,500	293,000	14,096,500
2004	5,426,250	8,732,200	293,700	14,452,150
2005	5,752,000	8,953,500	280,800	14,986,300
2006	6,845,000	10,137,500	290,000	17,272,500
2007	6,863,000	10,281,500	287,000	17,431,500
2008	6,775,000	9,614,000	292,400	16,681,400
2009	6,164,000	8,543,000	277,150	14,984,150
2010	6,232,500	8,553,500	276,600	15,062,600
2011	6,047,000	8,445,000	288,000	14,780,000

Barbecue Grill and Smoker Unit Shipments

1985--2011

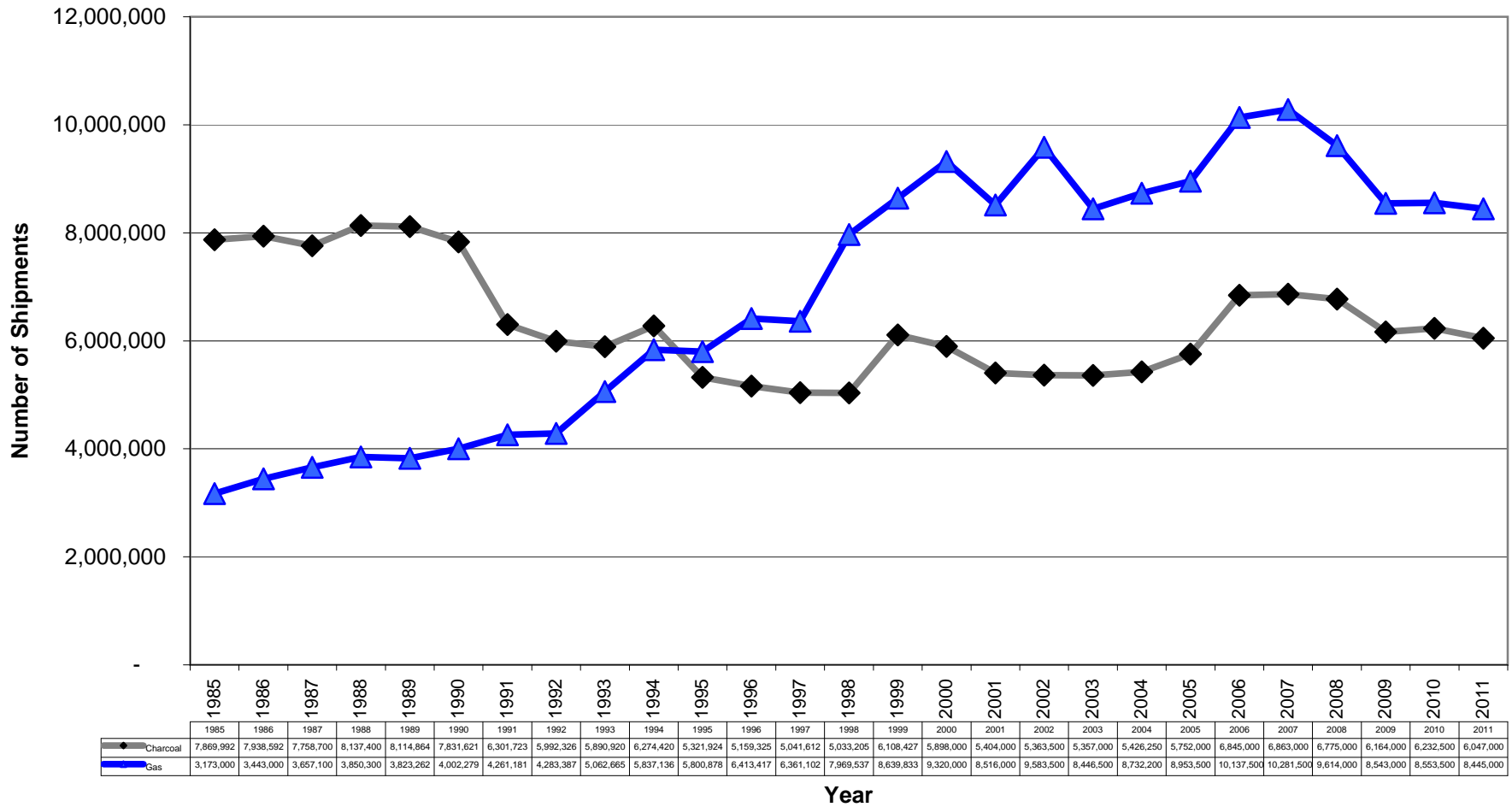


	1985	1986	1987	1988	1989	1990	1991	1992	1993	1994	1995	1996	1997	1998	1999	2000	2001	2002	2003	2004	2005	2006	2007	2008	2009	2010	2011
■ Electric	78,000	120,000	99,200	134,700	133,319	190,809	142,734	155,895	262,945	237,425	261,267	262,862	223,402	215,534	203,789	211,000	187,000	238,200	293,000	293,700	280,800	290,000	287,000	292,400	277,150	276,600	288,000
■ Gas	3,173,000	3,443,000	3,657,100	3,850,300	3,823,262	4,002,279	4,261,181	4,283,387	5,062,665	5,837,136	5,800,878	6,413,417	6,361,102	7,969,537	8,639,833	9,320,000	8,516,000	9,583,500	8,446,500	8,732,200	8,953,500	10,137,500	10,281,500	9,614,000	8,543,000	8,553,500	8,445,000
■ Charcoal	7,869,992	7,938,592	7,758,700	8,137,400	8,114,864	7,831,621	6,301,723	5,992,326	5,890,920	6,274,420	5,321,924	5,159,325	5,041,612	5,033,205	6,108,427	5,898,000	5,404,000	5,363,500	5,357,000	5,426,250	5,752,000	6,845,000	6,863,000	6,775,000	6,164,000	6,232,500	6,047,000

Year

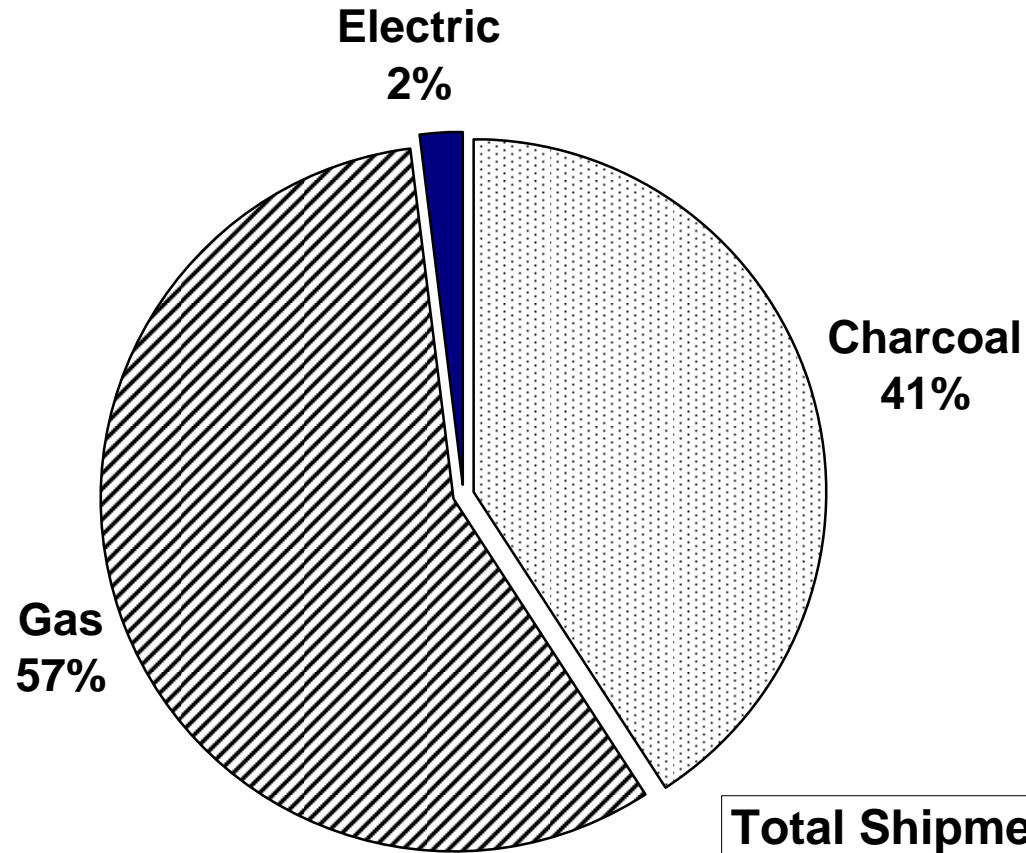
Charcoal
 Gas
 Electric

Gas vs. Charcoal Unit Shipments 1985-2011



Charcoal
 Gas

Barbecue Grill and Smoker Unit Shipments 2011



Total Shipments in 2011 -- 14,780,000